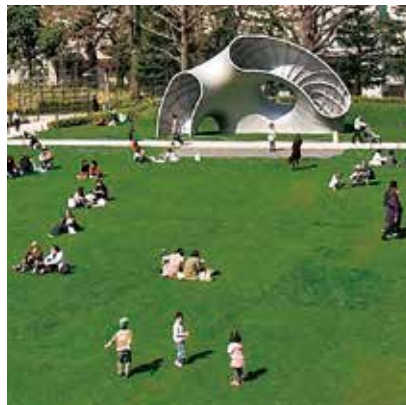


TOKYO MIDTOWN
GUIDE

VISION



JAPAN VALUE Japan's new value, from this town to the world

A town that epitomizes 21st century Japan – that was the starting concept of the Tokyo Midtown project. Tokyo Midtown creates and gathers new Japanese values, sensibilities and talents to keep presenting them to the world. There you will find the futuristic urban ideal and the unique originality.



CONCEPT

Diversity

A “collaboration of urban functions”
– A chance to encounter new values

Shops, offices, residences, hotel, greenery park, art museums, and design exhibitions; All these advanced facilities come together to create new energy and innovation.

Hospitality

A town that preserves
the Japanese tradition of hospitality

A warm welcome in the wonderful Japanese tradition of hospitality we carry on today. All the staff of Tokyo Midtown are ready to serve you with cordial hospitality.



On the Green

A natural ambience liberates
and invigorates the town and its people

About 4 hectares of open space. An expansive park with native flora is an oasis of respite from the hustle of a big city.

Creativity

Inspiring design &
art from around the world

Decorated with sculptures and works of art that defy nationality or genre, we offer places such as art museums and design exhibitions to inspire your creativity.

Overview



● Location: 9-chome, Akasaka, Minato-ku, Tokyo ● Site Area: approx. 68,891m² ● District Planned Area: approx. 102,000m² ● Bulk Floor Area: approx. 460,463m² ● Total Floor Area: approx. 563,801m²; Bulk Ratio: 670% [Office: approx. 311,176m² (Leasable Area: 184,000m²); Residences: approx. 96,474m² (410 rooms); Serviced Apartment: approx. 21,004m² (107 rooms); Hotel: approx. 43,752m² (248 rooms); Commercial Facilities: approx. 70,993m² (130 stores); Others (Hall & Conference, Museum, etc.): approx. 20,401m²]

Core Architect NIKKEN SEKKEI LTD. ; Master Architect SOM (Skidmore, Owings & Merrill LLP) ; Design Wing Tadao Ando ; Gardenside (Museum Building / Commercial Building) Kengo Kuma ; Gardenside (Residential Building) / Underground Passage & Exit Takenosuke Sakakura ; Park Residences exterior Jun Aoki ; Landscape AECOM ; Galleria and other (Commercial Space) Communication Arts, Inc. ; The Ritz-Carlton, Tokyo Interior / Park Residences Interior Frank Nicholson, DESIGN STUDIO SPIN

| | | |
|---|--|---|
| <h3>Shops & Restaurants</h3> <ul style="list-style-type: none"> ● Interior & Design ● Fashion ● Food & Cafe ● Restaurant & Bar ● Service <p>Stylish shops and restaurants rising to meet the standards of the most sophisticated shopper.</p> | <h3>Design & Art</h3> <ul style="list-style-type: none"> ● Suntory Museum of Art ● 21_21 DESIGN SIGHT ● Tokyo Midtown Design Hub ● FUJIFILM SQUARE ● Public Art <p>A museum of art and centers for design to encourage creativity and the exchange of ideas.</p> | <h3>Green & Park</h3> <ul style="list-style-type: none"> ● Midtown Garden ● Minato City Hinokicho Park <p>Extensive parkland for a breath of nature - Japan's four seasons in rich colors, from cherry blossoms in the spring to colorful leaves of fall.</p> |
| <h3>Hotel</h3> <ul style="list-style-type: none"> ● The Ritz-Carlton, Tokyo <p>An international hotel with world-class standards of hospitality.</p> | | <h3>Office</h3> <ul style="list-style-type: none"> ● Midtown Tower ● Midtown East ● Midtown West <p>A convenient location, full security, and refreshing space provide professional support for business.</p> |
| <h3>Residence & Serviced Apartment</h3> <ul style="list-style-type: none"> ● The Park Residences at The Ritz-Carlton, Tokyo ● Tokyo Midtown Residences ● Oakwood Premier Tokyo Midtown <p>State-of-the-art facilities and a wide array of services for a new kind of living.</p> | <h3>Medical Clinic</h3> <ul style="list-style-type: none"> ● Tokyo Midtown Clinic <p>A medical clinic offers first-class healthcare services for residents. English-speaking staff are available to assist you.</p> | <h3>Hall & Conference</h3> <ul style="list-style-type: none"> ● Tokyo Midtown Hall ● Tokyo Midtown Conference <p>Halls especially designed to host large-scale events, and Conference rooms for meetings, press conferences and parties.</p> |





Celebrate the Four Seasons at Midtown Garden

Tokyo Midtown is dedicated to putting people back in touch with nature. In this urban setting, you can feel the passing of the four seasons, especially in signature Japanese settings such as the streets lined with trees of colorful leaves in fall and cherry blossoms in spring. Midtown Garden offers a gallery of nature, with a beautiful pageant of trees on about 4 hectares of open space. This peaceful parkland rare in central Tokyo, relaxes the mind, enhances the aesthetics of the city, and helps to protect our environment.



MIDTOWN BLOSSOM



MIDTOWN ♥ SUMMER



MIDTOWN ♥ SUMMER



TOKYO MIDTOWN AWARD



Tokyo Midtown DESIGN TOUCH



MIDTOWN OPEN THE PARK



MIDTOWN CHRISTMAS



ICE SKATING RINK



NEW YEAR

Midtown Events —A Collaboration of Sensibility and Talent

Tokyo Midtown is the place to encounter new inspiration while enjoying the four seasons through cherry blossom events in spring, an open-air cafe where you can relax on the grass in summer and Christmas light and sound shows in winter. You can also find cutting-edge trends at Midtown, which offers an impressive lineup of events that stimulate the senses and encourage originality, including design events in the fall that bring together the work of talented designers from around the world, art events that showcase new young talents and the launches of exciting new products.

Shops & Restaurants

Fashion

Sophisticated Daily Life in the Heart of the City

Constantly attuned to the latest trends, while maintaining originality and creativity. Shopping at Tokyo Midtown is tailored to those who seek a sophisticated urban lifestyle, with an emphasis on design, functionality and quality, and choices made based on unique sensibilities. We have carefully selected about 130 shops and restaurants to offer valuable goods and services from all over Japan and the world. We also provide our Attendant Service in English, Chinese, and Korean for our visitors from overseas, as well as a Concierge Service to meet the needs of each customer, including shopping and dining recommendations, in English. A number of our shops offer tax-free shopping. Cards issued by UnionPay are accepted in certain shops and restaurants.

Fashion

Tokyo Midtown offers a truly unique shopping experience with an extensive selection of outlets that include Japan's first flagship boutiques and the world's first concept shops. From playful and trendsetting boutiques to prestigious brands valued the world over, this is a place for adults who appreciate the finer things in life.



lucien pollat-finet / Men's wear & Ladies' wear



TASAKI / Jewelry



ISETAN SALONE / Ladies' wear



PLEATS PLEASE ISSEY MIYAKE / Ladies' wear



Ron Herman / Men's wear, Ladies' wear, Kid's wear & Lifestyle goods, Cafe



ISAIA Napoli / Men's wear





THE COVER NIPPON / Furniture & Lifestyle products



WISE-WISE tools / Tableware & Lifestyle products

Interior & Design

Japan's stellar reputation in manufacturing derives from its commitment to quality, its love of beauty and its appreciation of things that last. All of these values are embodied in the furniture and interior goods available at Tokyo Midtown. Here you will find shops offering products that blend Japanese traditions with a modern flavor, along with special items from daily necessities to gifts that add a touch of class to daily life.



MUJIRUSHIRYOHIN / Lifestyle products & Furniture



NIHONBASHI KIYA / Cutlery & Lifestyle products



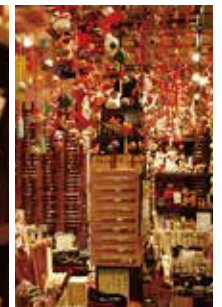
itoya topdrawer / Stationery



IDÉE SHOP / IDÉE CAFÉ PARC / Furniture & Cafe



HASHI CHOHO / Chopsticks & Japanese-style products





TORAYA / Japanese sweets, gallery & tea room

Food & Cafe



TEMPURA YAMANOUÉ Roppongi / Tempura

Restaurant & Bar

Food & Cafe

In the Food & Cafe area you can choose from many of Japan's finest shops and enjoy the best creations of world-class pastry chefs. The cafes, delicatessens, and eat-in corners conveniently located and easily accessible for a moment of relaxation. Visitors on longer stays can enjoy food delivery services and a 24-hour supermarket featuring a high-quality selection and English-speaking staff. Partake in international cuisine in a spacious setting.



Restaurant & Bar

Enjoy lunch on the terrace, overlooking the verdant scenery and enjoying the refreshing breeze. Tokyo Midtown offers a choice of the finest restaurants specializing in Japanese and international cuisines, equally suitable for casual dining or for that special occasions. The authenticity of the taste and the warm hospitality will create lasting memories.



KAYANOYA / Natural foods



SAKE SHOP FUKUMITSUYA / SAKE



HAL YAMASHITA TOKYO / Japanese fusion



Billboard Live TOKYO / Clubs & restaurants



Suntory Museum of Art

Based on the concept of "Art in life", special exhibitions of paintings, ceramics, lacquer ware, glass, and textile dyeing, are regularly held to continually convey the beauty of Japan to domestic and international audiences. These top-class collections, featured in a modern Japanese space, are a must-see.



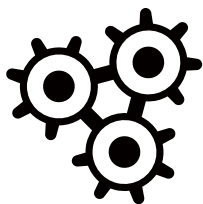
© Keizo Kioku

21_21 DESIGN SIGHT

Under the direction of leading Japanese designers, Issey Miyake, Taku Satoh, and Naoto Fukasawa, thematic exhibitions and programs are held regularly. The building showcasing 21_21 DESIGN SIGHT was designed by Tadao Ando, a leading Japanese architect. Visitors can explore, appreciate and experience the excitement of design.



left and center © Masaya Yoshimura
right "Design Anatomy" (2016-2017) © Satoshi Asakawa



Art Triangle Roppongi
六本木
アート・
トライアングル

Roppongi is attracting growing renown as a new center for design and art. In the vicinity of the Roppongi Art Triangle, which connects The National Art Center, Tokyo, Suntory Museum of Art and Mori Art Museum, you will find a number of art museums and galleries, each with their own characteristics. This is a place to experience the design and art of the moment in Tokyo.

Tokyo Midtown Design Hub

Groundbreaking discoveries are a constant in the world of design and creation. Share in all the excitement and enjoyment of innovations from Japan and abroad through special exhibitions, thematic exhibitions and workshops. Enter a world created by the imagination of designers from across different generations and fields.



FUJIFILM SQUARE

FUJIFILM SQUARE provides a photo gallery that has been established to allow visitors of all ages to enjoy and experience the elements of photography. The square also has a historical museum of photography that displays Fujifilm's antique camera collection.



Artwork in Tokyo Midtown

The entire Tokyo Midtown is designed to evoke the image of a garden where different cultures meet, and to propose a new relationship between city and art. Tokyo Midtown features a number of sculptures and paintings that transcend national boundaries and genres, infusing new life into the city. Enjoy art integrated with architecture and harmonized with all that Tokyo Midtown has to offer.



Facilities & Services



The Ritz-Carlton, Tokyo

The Ritz-Carlton, Tokyo is located in the Midtown Tower, holding its main entrance on the ground floor, the banquet and the meeting facilities on the 1st and the 2nd floor. The lobby and the restaurants are on the 45th floor, offering gorgeous panoramas including Tokyo Tower, Tokyo Skytree and Mt. Fuji. The 2,000-square-meter spacious The Ritz-Carlton Spa, Tokyo is situated on the 46th floor. The guest rooms are located between 47th and 53rd floor, with windows facing every corner around the tower. The Club Lounge is located on 53rd floor, which is well above 200 meters off the ground, offering an elevated level of luxury to global travelers.

Restaurant Guide

- Hinokizaka (Kaiseki, Sushi, Tempura, Teppanyaki / 45th Floor)
- Azure 45 (French Dining / 45th Floor)
- Towers (Contemporary Grill / 45th Floor)
- La Boutique (Chocolates & Pastries / 45th Floor)
- The Lobby Lounge (45th Floor)
- The Bar (45th Floor)
- The Ritz-Carlton Café & Deli (1st Floor)



Oakwood Premier Tokyo Midtown

Oakwood, a global leader and provider of furnished and serviced apartments worldwide. Oakwood Premier is a spectacular and elegant estate designed for upscale discerning guest who would be in need for residence for more than a month. 24hours reception, business center and fitness center are available.

Tokyo Midtown Clinic

An English-speaking assistant is permanently stationed at Tokyo Midtown Clinic so that residents can receive cutting-edge medical treatments. The clinic also provides insured medical treatment, general and complete health checkups, and aesthetic treatments to our visitors from overseas. It also has an esthetic dentistry and a supplement center onsite.



Tokyo Midtown Hall & Conference

Two multi-purpose halls of different sizes and nine different types of rooms suit conferences for all occasions. Equipped with state-of-the-art audio, video, lighting, and communication systems, these facilities are perfect for seminars, product releases, parties, fashion shows and other international events.

Nearby Tourist Attractions

Location & Access

The National Art Center, Tokyo
7-22-2, Roppongi, Minato-ku, Tokyo

Featuring one of the largest exhibition spaces in Japan. Instead of permanent exhibitions, it offers special exhibitions, public exhibitions and a broad lineup of must-see events.

akasaka Sacas
5-3 Akasaka Minato-ku, Tokyo

It is a fascinating entertainment complex that offers facilities to enjoy events that stimulate the senses, and cutting-edge plays and music, as well as the world's top-class restaurants. All kinds of events are held every season at Sacas Square.

Omote-sando

Lined with top-class restaurants and cafes, this street is also home to famous boutiques that offer an entirely new experience in a sophisticated adult atmosphere.

The Nezu Museum
6-5-1, Minami-Aoyama, Minato-ku, Tokyo

The extensive collection of tea-making implements and Oriental antiques are especially notable. The museum houses world-famous bronze ware from the Yin and Zhou dynasties of China.

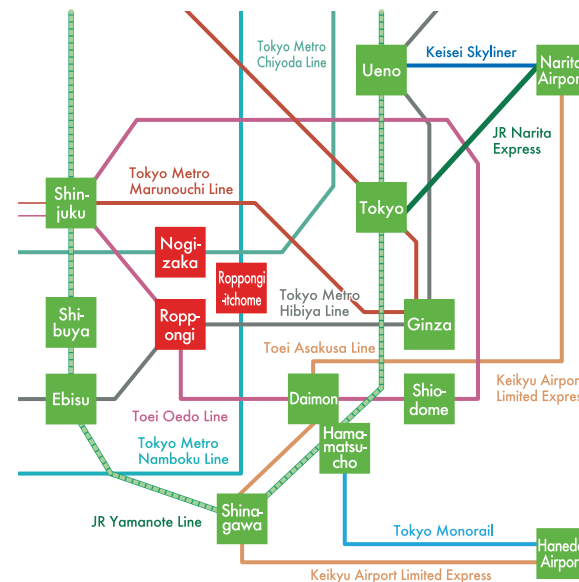
Mori Art Museum
ROPPONGI HILLS MORI TOWER (53F), 6-10-1 Roppongi, Minato-ku, Tokyo

An art museum on the 53F of Roppongi Hills features exhibitions in diverse genres, especially modern and contemporary art.

Tokyo Tower
4-2-8 Shiba-Koen, Minato-ku, Tokyo

An observatory that stands 250m above the ground provides a spectacular and panoramic 360-degree view. It is one of the Tokyo's must-see sights.

Travel time from major stations



| | |
|----------------|-----------|
| Ginza | 10-minute |
| Tokyo | 15-minute |
| Shinjuku | 10-minute |
| Shibuya | 15-minute |
| Ueno | 25-minute |
| Akihabara | 20-minute |
| Ikebukuro | 25-minute |
| Haneda Airport | 40-minute |
| Narita Airport | 80-minute |

* The time shown above is approximate.

Public Transportation

By Subway

- Toei Oedo Line – Direct link from Roppongi Station [Exit 8]
- Tokyo Metro Hibiya Line – Direct link via underground passageway from Roppongi Station [Exit 4a]
- Tokyo Metro Chiyoda Line – A 3-minute walk from Nogizaka Station [Exit 3]
- Tokyo Metro Namboku Line – A 10-minute walk from Roppongi-itchome Station [Exit 1]

*Passengers taking Tokyo Metro Hibiya Line with wheelchairs or strollers are encouraged to go up to the ground level from Roppongi Station [Exit 4a].

By Bus

- Toei Route 01 – A 2-minute walk from "Roppongi-ekimae" bus stop
- Community Bus "Chi-i-bus" – A 1-minute walk from "Roppongi 7-chome" or "Hinokicho Koen" bus stop

From Airport

Public Transportation from Haneda Airport

- Tokyo Monorail (Haneda Airport to JR Hamamatsucho Station) - Transfer to Toei Oedo Line (Daimon Station to Roppongi Station)
- Keikyū Airport Express (Haneda Airport to Shinagawa Station) - Transfer to JR Yamanote Line (Shinagawa Station to Ebisu Station) - Transfer to Tokyo Metro Hibiya Line (Ebisu Station to Roppongi Station)

Public Transportation from Narita Airport

- JR Narita Express (Narita International Airport to Shinjuku Station) - Transfer to Toei Oedo Line (Shinjuku Station to Roppongi Station)
- JR Narita Express (Narita International Airport) - Transfer to Tokyo Metro Marunouchi Line (Tokyo Station to Kasumigaseki Station) - Transfer to Tokyo Metro Hibiya line (Kasumigaseki Station to Roppongi Station)
- Keisei Skyliner (Narita International Airport to Keisei Ueno Station) - Transfer to Tokyo Metro Hibiya Line (Ueno Station to Roppongi Station)
- Airport Limousine (Narita International Airport to The Ritz-Carlton, Tokyo)